

2022

BETTER TOGETHER
BETTER FOREVER

A graphic featuring five parallel arrows pointing upwards and to the right, colored in shades of blue, green, yellow, and orange. The arrows originate from the left side of the page and point towards the right. Above the arrows, the text 'BETTER TOGETHER' is written in a curved, sans-serif font, with 'BETTER' in yellow and 'TOGETHER' in green. Below the arrows, the text 'BETTER FOREVER' is written in a similar curved, sans-serif font, with 'BETTER' in green and 'FOREVER' in yellow.



CONNECTION • COLLABORATION
COMMUNITY • COMMUNITY

Dear Community Foundation Friends,

As a lifelong Iowan, I've found a spirit here I cherish. We genuinely care for one another. We care about our communities and want them to be strong, not only for today, but well into the future. We are doers, driven to join together, roll up our sleeves, and get to work when there is a challenge or opportunity at hand. We are committed to being in community together.

This commitment to collaboration, connection and community doesn't just happen in the times when it is easy. It is an ever-present guidepost honoring the legacy of those who served as mentors and role models, the commitment we have to meet the needs of today and the ways we seek to inspire, through our example, those whose eyes are now turned toward us as they strive to be the leaders of tomorrow.

In 2021, you indeed honored, engaged and inspired. You granted more than \$51.9 million to over 2,500 charitable causes. You attended DonorConnect sessions to learn more about opportunities in the community you call home. Your partnership enabled us to engage more than 1,000 nonprofit staff and board members in trainings and conversations. You supported us as we served 46 affiliate counties and communities across the state to maximize giving statewide. Your generosity was astounding and yet you are not done. Over \$92.4 million in gifts were made to Community Foundation charitable giving funds as you continued your commitment to benefit the causes and communities you care about for today and tomorrow.

The past year has provided heartwarming experiences as we were presented with opportunities for reconnection and reengagement. To savor the simple things we've missed and to take advantage of opportunities to refill our cups in ways that can only come from connecting. Dining tables once again filling with family and friends, planning festivals to celebrate our communities, stage curtains rising, milestone celebrations filling calendars and so much more. While the numbers representing the success of the Community Foundation in 2021 are impressive, they are just that, numbers. The true realization of impact comes in the stories of lives changed, communities served and generations inspired. Stories like those found in the following pages and the stories each of you have told through your commitment to connections that count. We cannot do this work alone; it takes community. It takes you. Thank you for making us better together.

With deep gratitude and respect,

Kristi Knous

Kristi Knous
Community Foundation, President



2021 AT A GLANCE



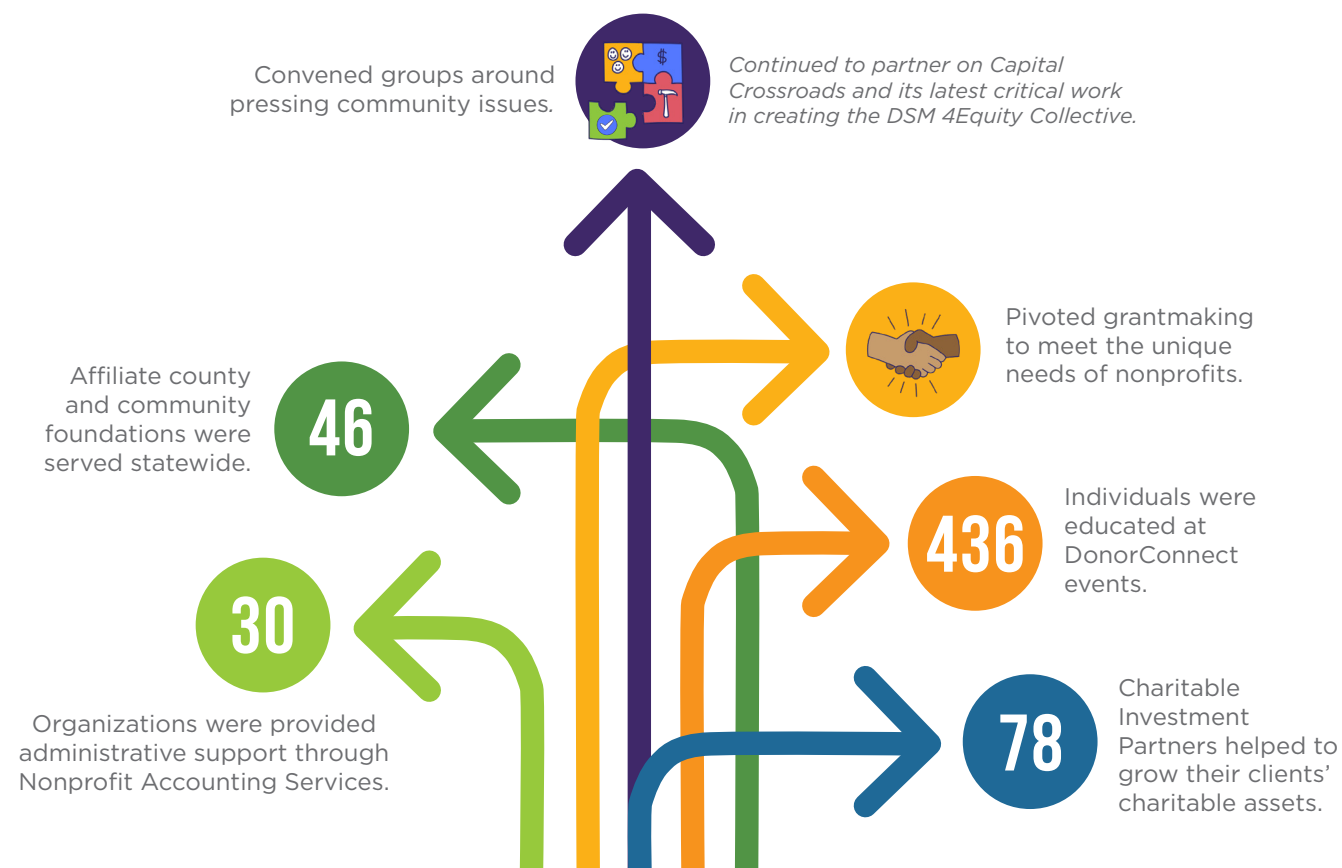
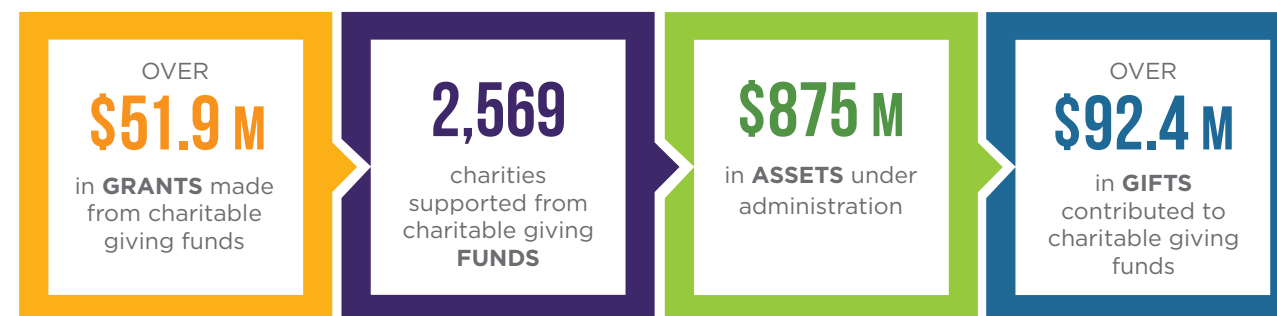
FROM BETTER TOGETHER FUND



COMMUNITY FOUNDATION TRAININGS & CONVERSATIONS



CHARITABLE GIVING FUNDS





“BY PARTNERING WITH THE COMMUNITY FOUNDATION, WE CONTINUE TO LEARN. WHETHER ATTENDING AN EVENT TO LEARN ABOUT NEW OPPORTUNITIES OR PARTICIPATING IN TRAINING FOR NONPROFIT VOLUNTEERS, THE COMMUNITY FOUNDATION IS OUR PARTNER IN TRANSFORMING DES MOINES.”

DIANE & ROGER MUNNS



Meeting Diane and Roger Munns, it doesn't take long to recognize they are a couple with tremendous energy and passion for the Greater Des Moines community. Energy and passion they are determined to put into action.

“We met here, and after 42 years of marriage, three kids and meaningful careers, we know Des Moines has been and continues to be the perfect place for us to call home,” says Roger. The couple has always shared an interest in supporting local causes financially and through volunteer service. “We've been active in many charitable groups, including the Drake Neighborhood Association, Habitat for Humanity and the FreeStore. It has been so much fun to see the difference volunteering makes,” adds Diane.

The couple had worked with their financial advisor to establish a donor advised fund with a company outside of Iowa to support their giving. “We were fine with the service we were getting through our previous donor advised fund provider, but when we learned about the Community Foundation of Greater Des Moines, moving our fund was a no-brainer,” says Roger. “We like to give our money to organizations and projects that make a difference locally. The services we enjoy and value,” shares Diane. “The Community Foundation allows us to support causes nationwide, but it is committed to making a difference in Greater Des Moines. I don't think everyone recognizes the important role nonprofits play in the success of our community, but the Community Foundation does. We wanted to work with a partner in giving that

would not only expertly manage our charitable assets but is also actively engaged in improving local quality of life.”

“I often hear from friends contemplating retirement they are concerned they won't know what to do with their time. To that, I say, get involved. Des Moines offers so many ways to engage, stay active and extend your social circle along the way. The reason we continue to volunteer and serve is that it is so much fun,” says Roger. Adds Diane, “And if you don't know where or how to get involved, reach out to the Community Foundation. They are a great way to plug in and get started.”

photo: Diane and Roger Munns are committed to the community through their volunteer service at the FreeStore and their charitable giving fund at the Community Foundation.



Imagine traveling halfway across the world with only one suitcase and a dream for a brighter tomorrow. For thousands of refugees entering Iowa, this is reality. A reality with unique and systemic obstacles organizations in our community are addressing, so the path to resettlement is accompanied by hope and a shared spirit of being welcomed to a new home.

Our community has a desire to help, but the overwhelming need can make it challenging to know where or how to offer support. As the Community Foundation seeks to make connections that count between donors and community needs, we facilitated a DonorConnect educational session featuring a panel of local leaders in refugee resettlement services to shine a light on needs and how to offer support.

“We've long felt called to support those who have been forced to begin anew. Refugees have faced great challenges and are simply seeking the things we often take for granted: A safe place to raise a family, make a living and create community,” shares Community Foundation fund holder, Jeanne O'Halloran. “Whether through DonorConnect, GIVEdsm or conversations with staff, the Community Foundation provides a variety of ways to educate ourselves and make charitable giving decisions.”



“PRESENTING AT THE COMMUNITY FOUNDATION'S DONORCONNECT SESSION WAS A POWERFUL EXPERIENCE. WE FELT THE SUPPORT OF OUR COMMUNITY AS WE WELCOMED REFUGEES TO GREATER DES MOINES. THE WAYS THESE CONNECTIONS HAVE TURNED INTO ACTION HAVE BEEN INSPIRATIONAL AND MOTIVATING AS WE CONTINUE TO SERVE.”

KERRI TRUE-FUNK

U.S. COMMITTEE FOR REFUGEES & IMMIGRANTS DES MOINES
FIELD OFFICE, DIRECTOR

DonorConnect panelists highlighted the pressing need for household items as refugees are not given the opportunity to bring essential home furnishings on their journey. “The connection the Community Foundation provided to local service providers came at just the right time,” says Kim Willis, a Community Foundation fund holder. “My mother recently passed away and I was going through the emotionally and physically difficult task of preparing her home to sell.

When I heard about efforts to collect furniture and home goods, it was a perfect fit. I knew my mom would have loved helping others make their house into a home and I cherished the opportunity to channel a difficult time into an opportunity to provide hope to others.”

photo: Volunteers help refugees find a home in the Heartland thanks to donations of home goods, promoted through DonorConnect.



“WE’VE BEEN FORTUNATE OUR CHILDREN STAYED IN CENTRAL IOWA TO RAISE THEIR FAMILIES. BUT KNOWING OUR GRANDCHILDREN MAY SCATTER IN THE FUTURE, WE FEEL THIS FUND AT THE COMMUNITY FOUNDATION IS NOT ONLY A WAY TO TEACH THEM ABOUT GIVING, BUT AN OPPORTUNITY TO BUILD THEIR CONNECTIONS TO ONE ANOTHER AND IOWA.”

MARCIA & RICH FLAUGH



GENERATIONAL GIVING •
GENERATIONAL GIVING

Marcia and Rich Flaugh have a clear, shared belief that grounds them; keep gratitude at the center. “What we have received from giving has been tremendous,” shares Rich. “As we reflected on this, we wanted a way to involve our grandchildren, putting charitable decisions in their hands and developing an attitude of giving at a young age.” Adds Marcia, “We were intentional to model the importance of community engagement to our children and they have grown into

wonderful, generous people. Now it is time to find an opportunity to share what has been so important to us with our eight grandchildren.”

The Flaughes shared their idea with their financial advisor, who quickly saw a solution by working with the Community Foundation to open a charitable giving fund. “My grandparents told us they had started a charitable giving fund and the grandkids were in charge

of determining Iowa causes it would support,” shares eldest granddaughter, Hannah. “Each of my cousins and I came to our family cookie decorating party in December prepared to present on an Iowa organization we felt was deserving of our support. When that day arrived, the cousins were sent to the basement by ourselves to make our presentations and decisions.” Adds Rich, “As much as we would have loved to hear the conversation, it was important we stay completely out of it so they could learn from one another.”

“We all took the responsibility very seriously. We understand what a financial gift can do to help an organization and the way it can transform lives,” says Hannah. “All eight of us shared about different organizations. Each shed light on the person’s interests, and I learned about both the causes and my cousins. Following the presentations, we took a vote and determined a single organization to receive our grant for the year.”

“The experience was awesome, but the look of pride on my grandparents’ and parents’ faces as we excitedly shared our discussion and decisions was something I will never forget,” shares Hannah. Adds Rich, “What a blessing it has been to watch our grandchildren experience the joy of giving. We hope it will continue to shape their commitment to community support for years to come.”

photo: Marcia & Rich Flaugh are passing on the gift of giving by establishing a charitable giving fund that their grandchildren advise as the Flaugh Family Board of Directors.

For nonprofit organizations in our community serving children and families in need, the COVID pandemic brought new challenges, but it also solidified what they knew about themselves. “We work in crisis each day,” shares Chris Koepplin, Ellipsis CEO. “COVID was a different type of crisis, but because of our expertise, we were able to pivot quickly to take care of both the kids we serve as well as our staff teams.”

As the Community Foundation connected to leaders and listened to the needs of the nonprofit sector, it became critical to pivot alongside them and redesign grant programs to be responsive to current conditions. One such change was the creation of Strategic Collaboration Grants to financially support local nonprofits as they explored conversations around shared services, alignment, or mergers.

“Youth Homes of Mid-America and Youth Emergency Shelter and Services (YESS) were tenured organizations that have long had great respect for one another as we worked in ancillary spaces to help kids succeed. For years we have talked about how we might work better together but didn’t have the resources to support a thorough and professional evaluation to determine if a merger was possible or prudent,” says Chris.

The Community Foundation’s Strategic Collaboration Grant provided the opportunity to take the next step on a new path to success. “Talking with the Community Foundation, I was surprised what a cheerleader they were for us to explore this work. They encouraged us to have the conversation and even if the answer was no, that would be ok.”

Using the grant support to engage a consultant led the boards of



“ONE OF ELLIPSIS’ CORE VALUES IS RELATIONSHIPS. EVERY DAY IN OUR WORK WITH CHILDREN AND FAMILIES, WE SEE THAT WE CANNOT DO IT ALONE. THE COMMUNITY FOUNDATION SHARES THIS VALUE AND LEANS INTO THE POWER OF CONNECTION AND COLLABORATION TO STRENGTHEN OUR COMMUNITY.”

CHRIS KOEPLIN
ELLIPSIS, CEO



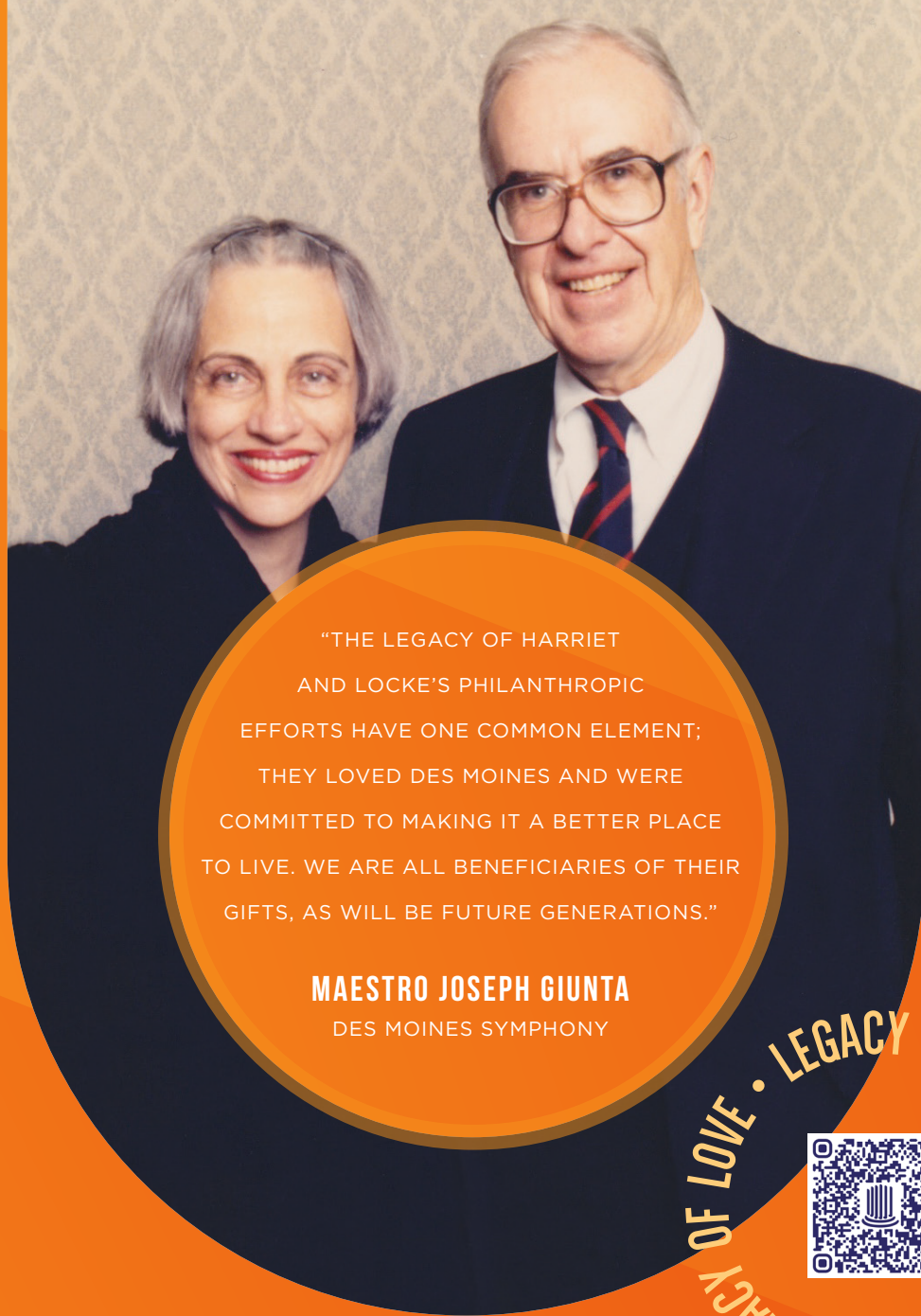
NEW BEGINNINGS •
NEW BEGINNINGS

both organizations to determine a merger was the right answer and led to the creation of Ellipsis, a critical safety net for kids and families in need.

Adds Chris, “The Community Foundation understands there are significant costs associated with a merger, but they recognized this would be the best thing for the kids, families and communities we serve. We could not have done this without their grant support and

staff guidance. Ellipsis works in the space that strives to help kids and families recognize this is where they are today, but there is a future full of opportunity to rewrite their story and move forward. Thanks to the merger, no matter where someone falls on the continuum of care, we are ready to welcome them and make life-changing connections.”

photo: Ellipsis can meet the needs of children and families along the continuum of care thanks to the merger of Youth Homes of Mid-America and Youth Emergency Shelter and Services.



"THE LEGACY OF HARRIET AND LOCKE'S PHILANTHROPIC EFFORTS HAVE ONE COMMON ELEMENT; THEY LOVED DES MOINES AND WERE COMMITTED TO MAKING IT A BETTER PLACE TO LIVE. WE ARE ALL BENEFICIARIES OF THEIR GIFTS, AS WILL BE FUTURE GENERATIONS."

MAESTRO JOSEPH GIUNTA
DES MOINES SYMPHONY



LEGACY OF LOVE • LEGACY OF LOVE • LEGACY OF LOVE

With intention and commitment, Harriet and Locke Macomber dedicated themselves to organizations in our community they truly loved. Throughout their over 40 years of marriage, the couple was active in organizations which started in this community, expanded in this community and now live on in this community. Together they were engaged participants for decades in leadership roles with many nonprofits, including the Des Moines Art Center, Des Moines Symphony, Drake University, Orchard Place, YMCA of Greater Des Moines, United

Way of Central Iowa, the BWA Foundation and their church, St. Paul's Episcopal Cathedral.

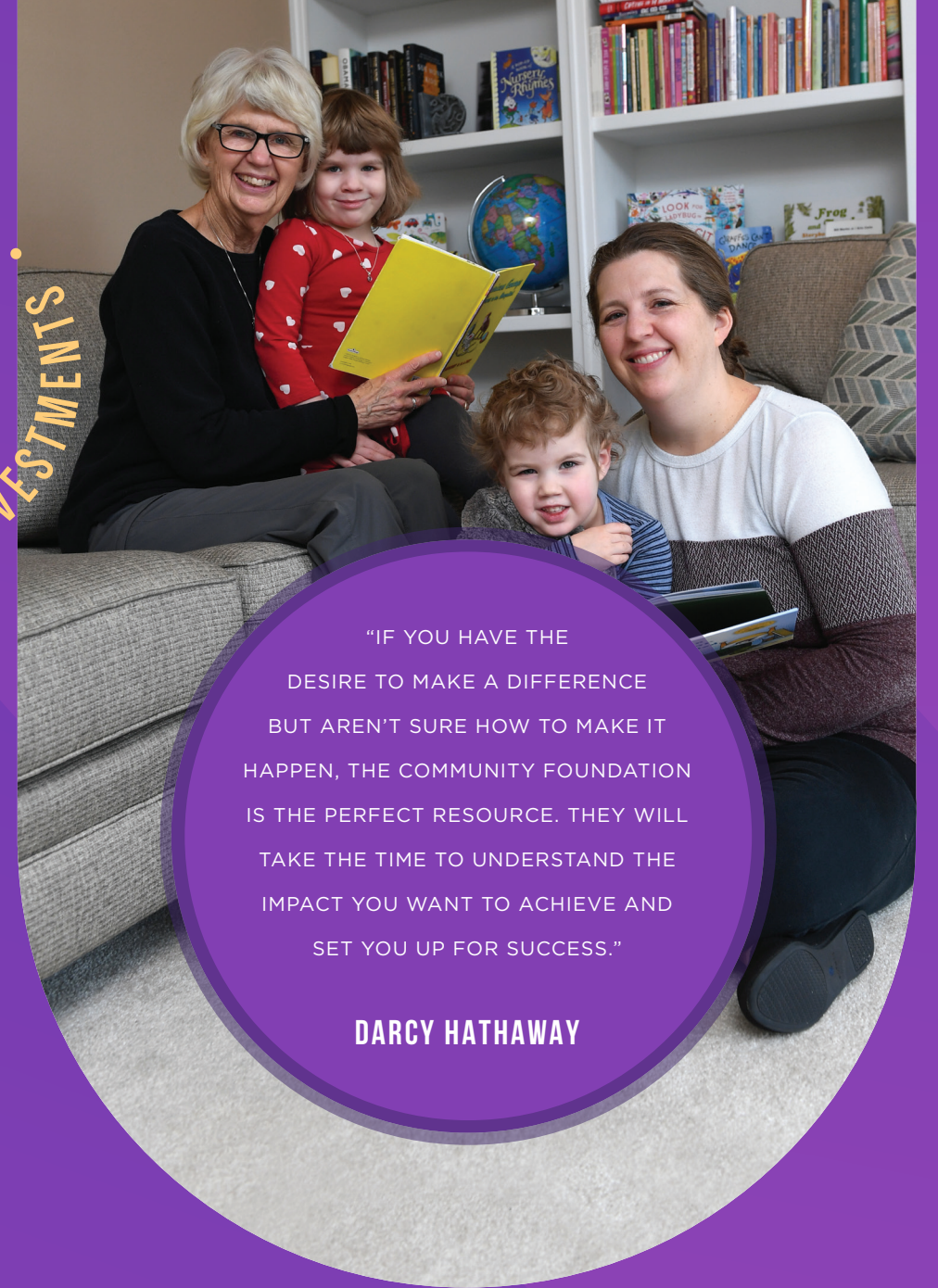
After Locke's passing in 1998, Harriet continued to be a loyal follower and patron of the organizations they enjoyed. She also began to work with the Community Foundation to plan for what would become the couple's lasting charitable legacy. Harriet established several Community Foundation charitable giving funds, each funding a local organization

she and Locke had supported through volunteer service and annual giving. Her investment acumen drew her to the Community Foundation allowing her charitable assets to grow over time, maximizing her giving. Considering her long-time partnership with the Community Foundation and the trust she had developed, Harriet began planning how she could continue supporting the causes she cared about during her lifetime. She worked with her professional advisors to include gifts to her Community Foundation funds in her estate plans. This became an opportunity for her to provide sustainable support and to honor the memories of Locke and the generations of family before them who had called Des Moines home.

Upon Harriet's passing in 2020, our community lost not only a committed volunteer but an intentional and strategic charitable spirit. Her careful planning and astute investing ensured her impact would continue. With Harriet's instruction, over \$45 million will create lasting endowments forever benefiting eight local organizations. This act of generosity marks the largest estate gift ever facilitated by the Community Foundation and the largest contribution in the history of many of the recipient organizations.

"The Macomers were great supporters of this community, and especially the Des Moines Art Center. Harriet was a board member and later an honorary trustee, but perhaps most importantly, she was a participant. With this financial support, the Art Center can more fully participate in the art of our time," shares Jeff Fleming, Des Moines Art Center director. Thanks to the community-minded and generous spirit of Harriet and Locke Macomber, the couple indeed left a legacy of love.

photo: Harriet and Locke Macomber have left a lasting legacy to the community through the Community Foundation.



"IF YOU HAVE THE DESIRE TO MAKE A DIFFERENCE BUT AREN'T SURE HOW TO MAKE IT HAPPEN, THE COMMUNITY FOUNDATION IS THE PERFECT RESOURCE. THEY WILL TAKE THE TIME TO UNDERSTAND THE IMPACT YOU WANT TO ACHIEVE AND SET YOU UP FOR SUCCESS."

DARCY HATHAWAY

It is often said one's life story can be told through their actions. For mother and daughter Kathy Lane and Darcy Hathaway, their love of literature has inspired them to contribute to the stories of our community's youngest learners.

Darcy has always been driven to make a difference. "When asked what I wanted to be when I grew up, I always said a philanthropist. People would laugh at such a big word coming from a little person and tell me I needed to be rich to be a philanthropist. But as I graduated from law school and my husband and I welcomed our first daughter, we wanted giving to be part of her life," shares Darcy.

Adds Kathy, "As Darcy shared her dream with me and my husband Tom, we encouraged her to talk to the Community Foundation. They assisted our school system in creating a foundation, and we were impressed by the professionalism and expertise offered."

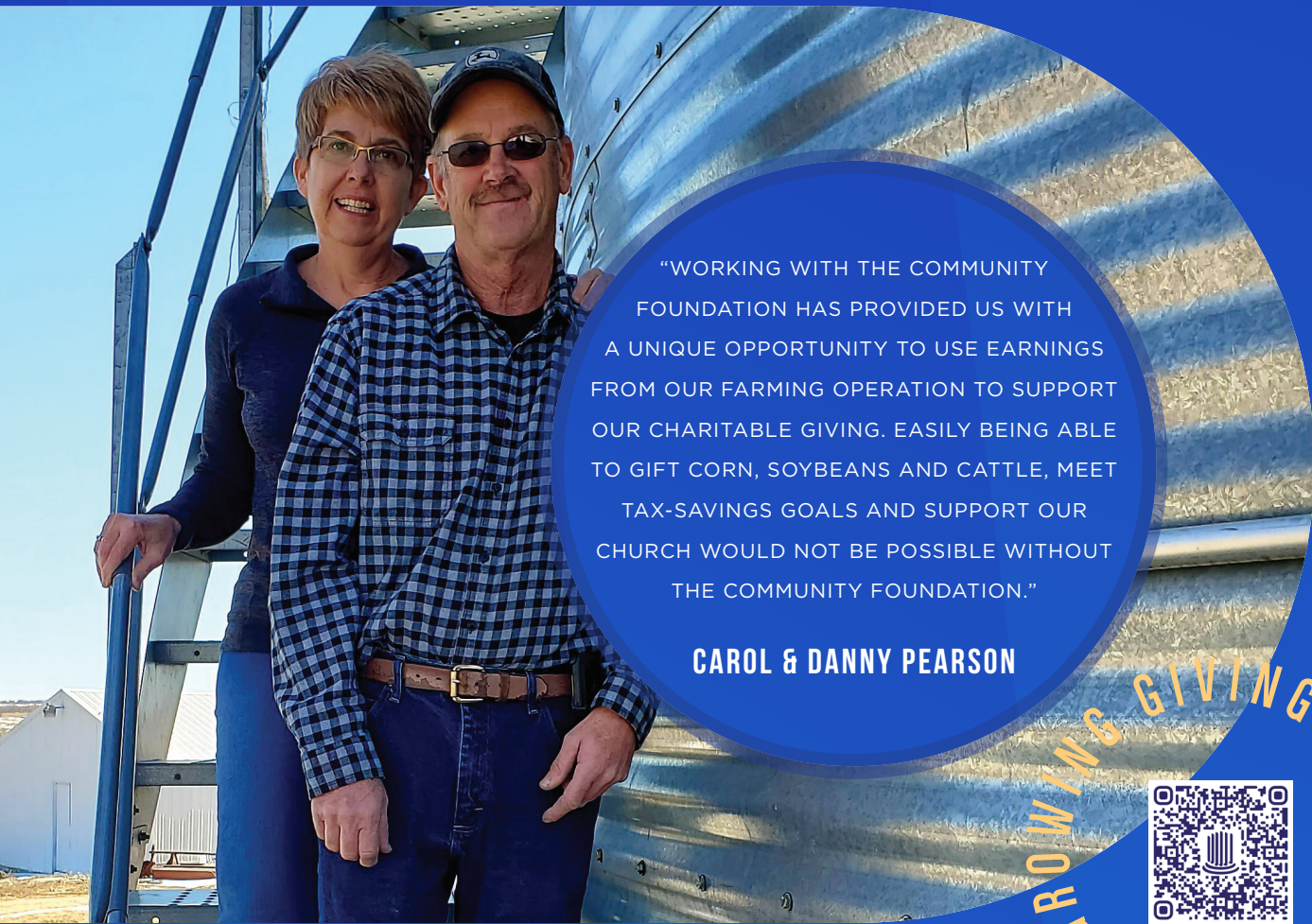
Darcy's passion for giving is matched by her belief in the power of education. "My parents and older brothers are all educators. My mom's rock-solid commitment to reading to me every night made school easier. In turn, I did well in the classroom which

led to new opportunities." The family joins together to inspire children on their literacy journey through a charitable giving fund at the Community Foundation supporting early childhood reading.

"Before we make grant recommendations each year, the Community Foundation shares information on organizations working in early childhood literacy. This is a topic I am passionate about, but I don't know how to

have the most impact," says Darcy. "The Community Foundation has been an expert partner as we learn. Everyone treats us so well and leaves me thinking, 'They know we aren't millionaires, don't they?' Their research, scheduling of site visits and more has provided a uniquely personal approach to giving we wouldn't experience elsewhere."

photo: Darcy Hathaway (right) has made giving back an important part of her daughters' lives, just as her mother, Kathy Lane, made reading an important part of hers.



“WORKING WITH THE COMMUNITY FOUNDATION HAS PROVIDED US WITH A UNIQUE OPPORTUNITY TO USE EARNINGS FROM OUR FARMING OPERATION TO SUPPORT OUR CHARITABLE GIVING. EASILY BEING ABLE TO GIFT CORN, SOYBEANS AND CATTLE, MEET TAX-SAVINGS GOALS AND SUPPORT OUR CHURCH WOULD NOT BE POSSIBLE WITHOUT THE COMMUNITY FOUNDATION.”

CAROL & DANNY PEARSON



GROWING GIVING
GROWING GIVING

Carol and Danny Pearson keep family at the heart of all they do. Raising their own family on the homestead where Danny grew up, located only one mile from Carol's childhood farm, the Pearsons' roots run deep in the Knoxville area. “We were each blessed with great families who helped us as we started our farming operation and inspired us as we began to give back to our community,” shares Danny.

Married for over 40 years, the Pearsons have been committed to their family farm as they raise cattle and grow crops on land purchased from each of their parents. Their commitment to the farm is only equaled by their commitment to their community. “Not only is our immediate family important to us,” shares Carol, “our faith family is important to us.” The couple has long been active volunteers in their church, engaged in missions locally and in

the Dominican Republic. Says Danny, “Because of time spent volunteering, our eyes have been opened to how blessed we are. In turn, we have felt called to find ways to give back.”

As the couple took a phased approach to retirement and prepared to move from earned income to passive income, they met with their local CPA to consider opportunities to support causes they care about in tax-wise ways. “Our accountant suggested we work with our local community foundation, and we are so glad he shared this opportunity with us. Opening a fund at the Community Foundation was the perfect opportunity to expand our giving while also providing us with tax solutions,” says Danny.

The couple created a charitable giving fund with the Marion County Community Foundation, one of the Community Foundation of Greater

Des Moines' 46 county and community affiliates, to simplify and maximize their giving. “The Community Foundation's ability to accept a variety of gift types has been a great solution for us. We have gifted corn, soybeans and cattle through the Community Foundation to support our charitable giving fund. We've realized tax savings using our agricultural assets that can be used to support our church and its mission projects,” says Carol. Adds Danny, “We've been pleased with the Community Foundation. Their staff team is incredibly helpful and dedicated to making giving easy and personal.”

photo: Carol and Danny Pearson are using agricultural assets to strategically support causes they care about.

We recognize being better together requires the table to be bigger, inclusive of all voices and creating community by including all communities. The Community Foundation sits in a unique position to collaborate with influential leaders and groups serving our local communities of color to shine a bright light on their work and elevate their critical voices. In striving to create an equitable Greater Des Moines, leadership means we are part of the solution by being a partner who actively listens, offers connections and amplifies the powerful work being done.



MEJORES JUNTOS
MEJORES JUNTOS

The Community Foundation has been honored to invest in community efforts elevating equity through our grantmaking programs. Efforts such as the creation of the DSM 4Equity Collective. The DSM 4Equity Collective elevates Central Iowa's commitment to racial equity by creating and implementing sustainable cross-sector action-driven measurable shifts in policy, systems and practice. “The time for this work is past due,” says Renee Hardman, tri-chair of the DSM 4Equity Collective and West Des Moines City Council member. “Within our community, we can do better and we must. This diverse group of leaders is coming together to strategize on how to make a meaningful transformation when it comes to racial equity in our region.”

Such meaningful change must include understanding historical and current barriers for our marginalized neighbors. Thankfully, there are organizations committed to painting a clear picture. The Directors Council's OneEconomy initiative has developed the Blueprint for Action as an opportunity to understand the realities facing Black Polk County along with systemic changes we must make. The Latinx Project recently



“LATINX IOWANS ARE THE FASTEST GROWING POPULATION IN OUR STATE. INVESTING IN EQUITY IS AN INVESTMENT IN THE FUTURE OF IOWA AND WE ARE THANKFUL FOR THE COMMUNITY FOUNDATION'S RECOGNITION AND SUPPORT AS WE SEEK TO AMPLIFY THE VOICES OF IOWANS WHO ARE FAR TOO OFTEN IGNORED.”

ALEJANDRO HERNANDEZ

IOWA LATINX PROJECT LEADERSHIP TEAM,
DEAN OF DRAKE UNIVERSITY'S
COLLEGE OF BUSINESS AND
PUBLIC ADMINISTRATION

released the Nuestro Iowa Report as an interactive opportunity to understand the statistics and stories of the Central Iowa Latinx community. A community that is often not reflected in existing data. It was the Community Foundation's honor to provide grant support for these studies because through data, we can learn and better understand the people who call Greater Des Moines home and their needs, challenges and strengths to create a shared vision for a welcoming, thriving future.

Improving the quality of life for all is core to the Community Foundation's mission. As we support and elevate the tireless champions of change in our community, we are thankful for their leadership and voices. Equity must be the thread that connects us all and makes us better together.

photo: Mejores juntos is not only better together in Spanish, it's a fitting reminder of the critical role collaboration plays in elevating equity through projects such as those led by Alejandro Hernandez with Nuestro Iowa, Renee Hardman with the DSM 4Equity Collective and Margaret Wright with One Economy.

COMMUNITY FOUNDATION

CAMPUS AND C3 CENTER



For over 50 years, the Community Foundation has been committed to our mission to improve the quality of life for all by promoting charitable giving, connecting donors with causes they care about and providing leadership on important community issues. We have seen time and time again that our community is better together, and we are committed to making it better forever.

As we look forward, we are building the foundation today to create priceless and visionary connections to carry our community into tomorrow. As the Community Foundation, our staff team, the nonprofit sector and the Greater Des Moines community continue to grow, we are enhancing our physical footprint to accommodate this growth by creating the Community Foundation Campus and C3 Center.



The campus courtyard will connect the C3 Center to the Finkbine.

The Campus will include the iconic Finkbine at 1915 Grand Avenue, the enhancement of a current parking lot into an outdoor courtyard and the transformation of the building currently located at 1910 Ingersoll into the C3 Center.

The C3 Center is designed to be a hub for convening, training, leadership development and will serve as a space for the nonprofit sector to grow and thrive together. Opening in early 2023, the C3 Center will serve as the heart of Greater Des Moines, where **connections** are made, **collaborations** form and **community** is built.



The Community Foundation walked alongside the nonprofit community in 2021 investing strategic funding support as we all sought to nimbly manage the ongoing pandemic and its impact on Greater Des Moines. Through the generosity of donors to the Better Together Fund, the Community Foundation addresses pressing needs, provides leadership and supports critical work improving the quality of life for all.

LEADERSHIP GRANTS

The Leadership Grant program, funded by the Better Together Fund, provided five awards to projects making a significant impact on the lives of individuals and families throughout Greater Des Moines.



Bravo is committed to ensuring all young people in our region have access to an array of creative and cultural experiences. The Community Foundation's support offered an opportunity to plan for the creation of the Passport to Culture program benefiting public school students' in kindergarten through 5th grade as Bravo reduces barriers to accessing quality arts, culture and heritage experiences for our children.



The Community Foundation provided grant support for the Des Moines Area Religious Council's (DMARC's) new warehouse and headquarters as it seeks to expand services and increase impact through its food pantry network. Though this expansion was planned pre-pandemic, there is now increased urgency and need as food insecurity continues to rise in Greater Des Moines.



Families with children facing a mental health crisis are often left without a place to turn for critical care. To meet this community need, Easterseals Iowa, with support from a Community Foundation grant, has renovated an existing campus facility into a safe space that stabilizes kids and families in moments of crisis.



Iowa Healthiest State Initiative and Broadlawn Medical Center recognize social determinants of health play a significant role in our community's overall health. The Community Foundation's grant allowed these organizations to launch the Polk County Produce Prescription Program to provide access to fruits and vegetables alongside quality patient care. This program seeks to support families, people of color and low-income individuals on their path to positive health outcomes.



Proteus Inc. developed a successful model of providing medical and wraparound services to farmworkers and recognized the program could successfully grow with support. The Community Foundation's grant assisted the organization in expanding the pilot to provide the same level of quality care and access to service to those working in meat processing facilities, a population disproportionately impacted by the pandemic.

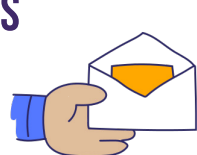
CAPACITY BUILDING GRANTS & STRATEGIC COLLABORATION GRANTS

As nonprofits continued to focus on strengthening overall governance and management, the **Capacity Building Grant** program provided 17 awards for strategic planning, succession planning, fund development planning and more. **Strategic Collaboration Grants** were awarded to seven initiatives seeking ways to leverage the strengths of colleague organizations to meet needs and create opportunities in Greater Des Moines.

TOTAL CHARITABLE GIVING FUNDS = 2,362



GRANTS

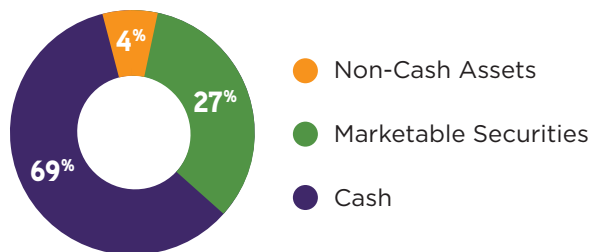


We sent **8,138** grant checks to charities from Community Foundation charitable giving funds.

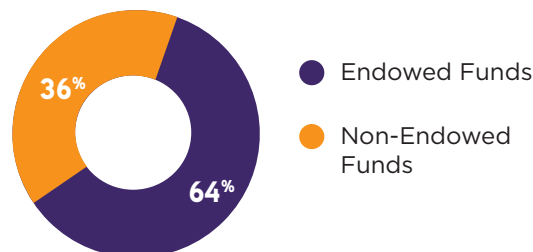


2,569 charities received support from Community Foundation charitable giving funds.

CONTRIBUTIONS BY TYPE

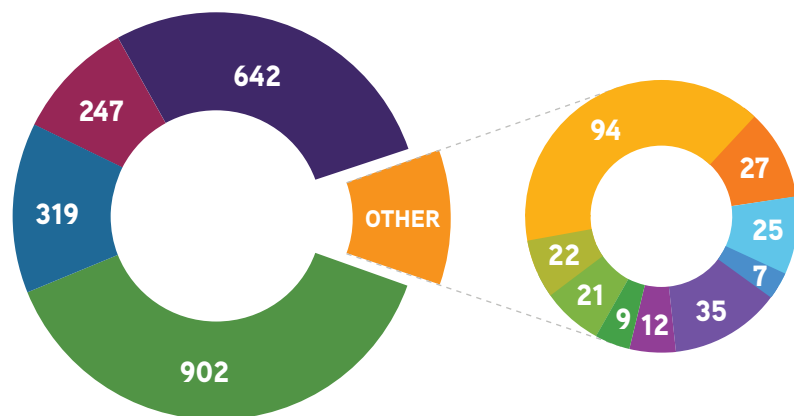


ENDOWED VS. NON-ENDOWED



CHARITABLE GIVING FUNDS BY TYPE

- Agency - 642
- Committee Advised - 247
- Designated - 319
- Donor Advised - 902
- **OTHER:**
 - Administrative - 7
 - Better Together - 35
 - Catalyst Circle - 12
 - Charitable Gift Annuity - 9
 - Community Betterment - 21
 - Field of Interest - 22
 - Legacy - 94
 - Scholarship - 27
 - Seed - 25

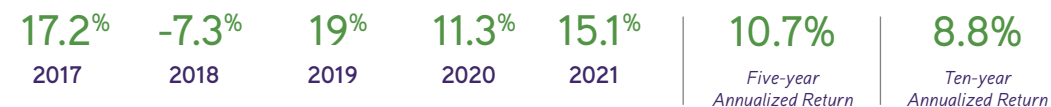


Audited financial statements are available at www.desmoinesfoundation.org/finance.
*Includes assets administered but not owned by the Community Foundation.

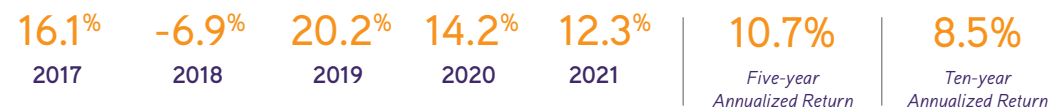
COMMUNITY FOUNDATION INVESTMENT PORTFOLIOS

The Community Foundation offers a variety of investment options to meet a range of charitable goals and time horizons. Each of our investment portfolios is carefully constructed and diversified across global investment opportunities to maximize return and minimize volatility. Returns are net of all investment fees. Returns for periods greater than a year are annualized.

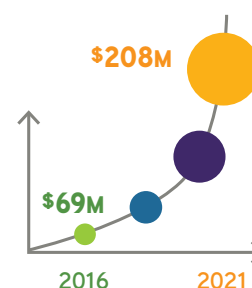
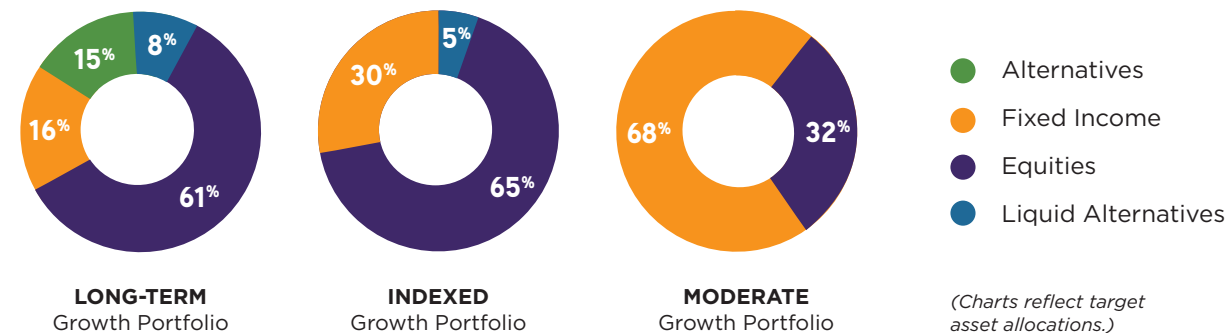
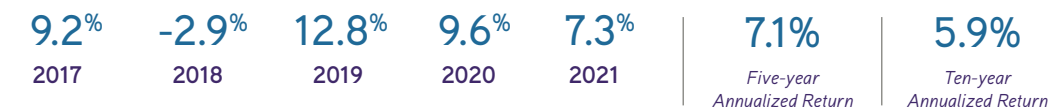
The Long-Term Growth Portfolio seeks maximum growth and controlled risk through a diversified portfolio of global stocks, bonds and alternative investment strategies.



The Indexed Growth Portfolio seeks maximum growth primarily through indexed funds and lower active management.



The Moderate Growth Portfolio is designed for growth at a more moderate level of risk.



OVER THE PAST 5 YEARS, THE CHARITABLE INVESTMENT PARTNER PROGRAM HAS GROWN FROM \$69 MILLION TO MORE THAN \$208 MILLION

Through this program, investment advisors can establish portfolios for Community Foundation charitable giving funds, providing their clients with unique charitable giving resources and personalized investment management.

2022 COMMUNITY FOUNDATION BOARD OF DIRECTORS

BOARD MEMBERS

Franklin Codel, *Chair, Community Volunteer*
Susan M. Fitzsimmons, *Vice Chair/Treasurer, Christensen Development*
Gerry Neugent, *Secretary, Knapp Properties*
Andrea Abel, *Community Volunteer*
Frederick V. Buie, *Keystone Electrical Manufacturing Co., Retired*
Teree Caldwell-Johnson, *Oakridge Neighborhood*
Joyce Chapman, *West Bank, Retired*
Marta Codina, *Wells Fargo Bank, N.A.*
Mary Coffin, *Wells Fargo Bank, N.A., Retired*
Peter Cownie, *Iowa State Fair Blue Ribbon Foundation*
Suzanna de Baca, *Business Publications*
Kathy Fehrman, *Community Philanthropist*
Allison Fleming, *Community & Child Advocate*
George Hiller, *Hiller & Associates*
Dan Houston, *Principal Financial Group*
Debbie Hubbell, *Community Volunteer*
Fred Hubbell, *Engaged Citizen*
Joseph Jones, *The Harkin Institute*
Dan Keough, *Holmes Murphy & Associates, LLC*
Izaah Knox, *Urban Dreams*
Steve Lacy, *Meredith Corporation, Retired*
Marty Martin, *Drake University*
Sheldon Ohringer, *Caleris, Retired*
Jill Oman, *Community Volunteer*

Darren Rebelez, *Casey's General Stores*
Sunnie Richer, *Doextra*
Robert G. Riley, Jr., *Riley Resource Group*
John Ruan IV, *Bankers Trust Company*
Mark Rupprecht, *R&R Realty Group*
Brad Schoenfelder, *Ryan Companies*
Jessica Snyder, *Insurance Professional*
Cynthia S. Thorland, *Life Care Services, Retired*

2022 EMERITUS BOARD MEMBERS

Charles H. Betts
Robert Burnett*
Monroe Colston*
Ann Cownie*
James S. Cownie
Johnny Danos*
William Friedman, Jr.
J. Barry Griswell*
H. Lynn Horak
James W. Hubbell, Jr.*
G. David Hurd*
Ted M. Hutchison

William C. Knapp
Linda Koehn
Donald F. Lamberti
Maddie Levitt*
James E. Luhrs*
Robert Mannheimer*
Amos Pearsall, Jr.*
Marvin Pomerantz*
J. Edward Power
Janis Ruan
Fred Weitz

* Indicates deceased members.

2022 COMMUNITY FOUNDATION STAFF

EXECUTIVE

Kristi Knous, MPA, CAP®, FCEP
President

AFFILIATE RELATIONS

Joe Sorenson, CAP®
Vice President of Affiliate Relations
Rebecca Murphy, MA, CAP®
Director of Affiliate Relations

CHARITABLE GIVING

Lynne Yontz, CAP®, FCEP
Chief Charitable Giving Officer
Jordan Richardson, CAP®
Senior Charitable Giving Advisor
Sarah Reichardt, MA, CAP®
Charitable Giving Advisor
Katie Getting
Associate Charitable Giving Advisor

COMMUNITY INVESTMENT

Angela Dethlefs-Trettin, MA
Chief Community Impact Officer
Ellie Burns, Ed.D
Director of Nonprofit Relations
Trisha Hayes
Administrative Assistant

FINANCE

Karla Jones-Weber, CPA, CGMA
Chief Financial & Administrative Officer
Kris Pete-Swanson
Vice President of Finance, Controller
Mark Benson
Systems Analyst
Shanna Bears, MSA, BBA
Senior Accountant
Sally Boeckholt, CNAP
Senior Accountant
Elizabeth Benson
Accountant
Tim Schreck
Accountant

(FINANCE CONT.)

Kevin Abler
Senior Accounting Associate
Meagan Denham
Accounting Associate
Kate McClaskey
Administrative Assistant

MARKETING

Sara Bonney, MPA
Chief Marketing Officer
Addie Olson
Senior Director of Marketing & Public Relations
Betsy De Glopper
Marketing Coordinator
Barb Hobson
Executive Assistant & Events Coordinator



1915 Grand Avenue, Des Moines, IA 50309
(515) 883-2626
www.desmoinesfoundation.org



Confirmed in Compliance
with National Standards
for U.S. Community
Foundations